



RiwakaNews

School's Out!



Kia ora e te whānau,

It's hard to believe we've already reached the end of Term 3! The past 10 weeks have been full of learning, connection, and celebration here at Our Place. From Book Week fun and assemblies that showcased our tamariki's talents, to whole-school projects and new learning opportunities, there has been so much to be proud of.

A huge thank you to our staff, students and families for the energy and aroha you bring each day — it really does take a village, and we are grateful for the way our Riwaka whānau supports each other.

Looking ahead, Term 4 is shaping up to be a big one. Please save the date

Saturday 29 November, 10am–3pm — for our

Riwaka School Country Christmas Fair!

This is our major fundraiser of the year and promises to be a fantastic day out for the whole community, featuring:

- A fun spin on the duck race: **Pluck a Duck!**
- The brand new **Best Baker** competition at the bake sale
- Performances - singing, kapa haka
- **Food stalls** galore
- **Car wash** and **White Elephant** garage sale
- **Silent auction**, **Big Dig...** and plenty more!



It's going to be an awesome celebration of our school and community — we can't wait to see you there.

As we head into the term break, I encourage everyone to enjoy some rest, adventure, and time together.

We look forward to welcoming everyone back for Term 4, refreshed and ready for an exciting finish to the year.

Ngā mihi nui,

Adele Lidgard
Tumuaki - Principal



Connected • Nurtured • Empowered

Riwaka te puna wai, whakatipu ngā tamariki - The flowing waters nurture our future generation

A Huge Thank You to Bill and Marama Stephens

We are beyond grateful to Bill and Marama for their incredibly generous donation of 50 Chromebooks and 20 iPads to Riwaka School.

This gift will make a huge difference for our tamariki. Access to up-to-date digital tools means our learners can dive more deeply into their inquiries, collaborate more easily with each other, and build the digital skills they need to thrive in today's world. It also helps ensure equity across our school — every child having the opportunity to use technology to support and enhance their learning.

What a fabulous way to invest in the future of our children and community. Bill and Marama, your kindness and belief in our school will leave a lasting legacy, and we are so appreciative of your aroha and support.

This generous act is a true reflection of our school vision — Connected in community, nurtured with care, empowered to flourish. With these tools, our learners are empowered to flourish in their learning and beyond.

thank
you!



Friday Hot Lunches

A big thank you to all our helpers this term; Rebecca Leijen, Aimee Herron, Lisa Brown, Shaunni Lloyd-Ivory, Arozz Wilson, and Jenna Compton and Amanda Atkins for organising.



In Term 4 we will be offering **Pie Day Friday**.

If anyone has time (about 1hr) to help with the lunches please contact the office

W E L C O M E

Welcome to our new Board:

Morag Ingram (3 year term)
Claire Brownlie (3 year term)
Shay Gill (3 year term)
Tim Norman (18 months term)
Jane Corston (18 months term)
Stevee Rhind (3 year term - staff trustee)



Board email: bot.riwaka@riwaka.school.nz

If you're having a clear out at home, think about donating any items that are in great condition to our **White Elephant garage sale!**

We will be gathering these items in Otūwhero from the start of Term 4.



RIWAKA SCHOOL

Country Christmas Fair

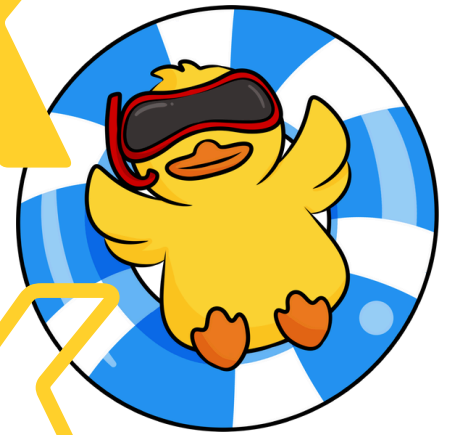
Saturday 29 November

10am-3pm

Come along to our BIG
fundraiser of the year!
Lots of fun and activities
for the whole family!



PLUCK a DUCK



White Elephant
garage sale

Car Wash

Food Stalls galore

Quick Fire raffle

Bake sale +
Riwaka's Best Baker

Big Dig

Silent Auction



SOME UPCOMING DATES

Mon, 6 October	8:50am 10:45am	Term Four starts Mihi Whakatau
Mon, 27 October		Labour Day - school closed
Fri, 28 November		Kapa Kaka Festival
Sat, 29 November	10am - 3pm	Riwaka School Country Christmas Fair
Wed, 10 December	9 - 10am 6 - 7pm	End of Year Celebration Assembly Year 8 Graduation Evening
Fri, 12 December		Year 8 Big Day Out
Mon, 15 December		Whole School Beach Picnic Day
Tue, 16 December	12pm	End of term

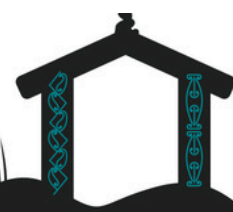


SWIMMING SEASON 2025 - 2026

Our pool will be set to open early in Term 4.
Once again we are delighted to be able to offer Pool Keys to our school whānau, in the first instance, and to the wider community shortly after.
These will be available in Week 2 next term.
Keys remain \$150 for the 2025-26 season and you will be required to sign a Pool Use Agreement.



HATS ARE COMPULSORY IN TERM 4
Everyone must wear a bucket hat when we are outside - play times, sport, any time
Hats can be purchased at the office.



COMMUNITY NOTICES

A HAUNTING WE WILL GO

FRIDAY 26TH & SAT 27TH SEPT
WAKEFIELD VILLAGE HALL
 BROUGHT TO YOU BY THE TEAM THAT MAKES YOU SCREAM
 AT THE WAKEFIELD SCHOOL GALA HAUNTED HOUSE!

HAUNTED HALL

A FUNDRAISER FOR THE WAKEFIELD COMMUNITY HUB

ALMOST SPOOKY FUN FOR ↑ EVERYONE!

Recommended for older primary age and up

\$10 Ticket Entry to the Haunted Hall experience.
 Door Sales only: Cash and EFTPOS available.

MILD FRIGHTS 6pm - 7pm
WILD FRIGHTS 7pm - 10pm

FOOD STALLS! ENTERTAINMENT!

OUR PLACE
 WAKEFIELD COMMUNITY HUB

In Nature Education
September Holiday Sessions

September 23rd, 24th and 25th
 \$55 per child per day
 Lower Moutere and Kina beach

PRIMITIVE BUSHCRAFT SKILLS
 Learn fire skills, survival, foraging and many more primitive and bushcraft skills

DEEP NATURE CONNECTION AND AWARENESS
 Gain a deeper connection with ourselves, each other and the natural world

ENVIRONMENTAL EDUCATION AND GUARDIANSHIP
 Learn about our natural world and how to take care of it and live alongside it

innatureeducation.com
 In Nature Education
naturenurturenz@gmail.com

OPEN DAY
OCT 5

WILLOW BANK

HERITAGE VILLAGE

ENTRY FEE:
 \$7 PER ADULT (AGES 18+)
 \$3 PER CHILD

WILLOW BANK HERITAGE VILLAGE IS A FUN AND INTERACTIVE LIVING MUSEUM 1KM SOUTH OF WAKEFIELD, NELSON. WE HAVE 20+ SHOP DISPLAYS FOR YOU TO EXPLORE, FOOD AND DRINK AND LOTS MORE.

SUNDAY 10AM - 3PM
OCT 5

1920'S MILK BAR / VICTORIAN STYLE CAFE / SECRET GARDEN
 1950S BURGER BAR / LAUNDRY / DRESS SHOP / PUPPET THEATRE
 CHILDREN'S SUITCASE MARKET / WORKING BAKELITE PHONES
 PLAYHOUSE / LIBRARY / DOLL MUSEUM / SCHOOL HOUSE
 GROCERY STORE / CINEMA / BARTER - SELL MARKET - MORE

info@willowbankwakefield.co.nz | @willowbankheritage
 AVAILABLE FOR GROUP BOOKINGS
WWW.WILLOWBANKWAKEFIELD.CO.NZ
 79 WAKEFIELD-KOHATU HIGHWAY, WAKEFIELD

Holiday Programmes

Go Wild (7-10 yrs)
 • September 22 - 26 | \$420pp

Kaitiaki Kids (10-12 yrs)
 • September 29 - October 3 | \$420 pp

ENROL NOW! www.wio.org.nz

WHENUA ITI OUTDOORS

TE TOTARA CAMP
SEPTEMBER 23-24 2025

Setters: 9am-10.30am
 Spikers: 11am- 3pm
 Juniors: 11am- 3pm

LEARN DEVELOP GROW

LEAD COACH
 Ben Laing
 VNZ
 Jnr Mens Coach

REGISTER NOW

1

volleyball

KIDZ KLUB AFTER 3
Superb Spring holiday programme
 22nd of September- 3rd of October 2025

8.30am - 3.30pm
 (aftercare may be available to 4:30pm depending on numbers)
 LOWER MOUTERE SCHOOL HALL

\$45 per day
 WINZ OSCAR Subsidies available to eligible families



To get an enrolment form for your children contact
 Leah Bailey-Young
 027 512 0687
Kidzklubafter3@gmail.com

BE IN QUICK AS SPACES ARE STRICTLY LIMITED!!!

Monday 22 nd September	Tuesday 23 rd	Wednesday 24 th	Thursday 25 th	Friday 26 th
Up, up and away! Today is all about BALLOONS! 	Paper planes and Origami Who's dart that will fly the furthest? And let's take home some beautiful paper origami 	Masterchef How creative can you get and baking? Who will be our Masterchef of the day? 	Arty Farty How creative can you get? There will be loads of different art stations to get arty today. 	Out and about! Where will the bus be going today? This is a trip not to be missed
Monday 29 th	Tuesday 30 th	Wednesday 1 st October	Thursday the 2 nd	Friday the 3 rd
Spring Crafts Flowers and freshly moved lawns, let's get Spring Crafting! 	Where's Wally? He will be hiding everywhere today. If you seek, you shall find! 	Fear Factor Do you have what it takes to become our Fear Factor Champion?!! 	Who's the boss? We are not the bosses today... so it must be you! 	Nerf gun wars Our famous capture the flag day, who will bring home the victory?