



RiwakaNews

#4 - 30 May 2025



**TERM TWO
2025**

Kia ora e te whānau - hello to all of our school families!
I hope you are keeping warm and dry wherever you are while keeping up to date with our Riwaka School news!

It has been an action-packed Autumn with our students getting out and about in our own backyard. Our visit from Rōpata Stephens helped us to understand more about Our Place from a historical and te ao Māori lens - lots of new information for our learners about what makes Riwaka such a special place. Then onto a bus and off we all went to Te puna ō Riwaka to hear more about the importance of this place, not just now or in history, but also for the future. Our students could see first hand where the kowhaiwhai pattern on our school logo comes from, and we sat under the lofty mountain, Pikipirunga (Takaka Hill), and heard about how it got its name.

Next up we put on our house colours and headed to the mountain bike park at Kaiteriteri for another memorable day of Cross Country. This has become a real community event with lots of whānau turning up and enjoying the atmosphere. A HUGE shout out to the volunteers who helped make the day run like clockwork!

This week we have begun our visits to the Motueka Museum to view a local and historical exhibition about our local area and people - Te Heke Whakangā. We look forward to deepening our knowledge about how our local area has changed over time and seeing if we can spot any 'whānau' while we are there.

Have Your Say – Help Shape Our School's Future

I'm inviting you to take part in a short survey to help choose a Vision Statement for our school. This is an important step in shaping an aspirational direction that reflects our community's values and hopes for our tamariki.

Your input will also help guide the development of our school's next strategic plan — defining our goals, shaping our priorities, and ensuring we stay focused on what matters most over the next four years.

The survey asks what our school whakataukī means to and for you, and your aspirations for the future of Riwaka School. Keep an eye out for the survey link later in the newsletter — we'd love to hear from you.

It is a privilege to be part of this awesome school whānau!

Have a lovely long weekend

Adele Lidgard

Tumuaki - Principal

Riwaka te puna wai, whakatipu nga tamariki
The flowing waters nurture our future generations



is cool!

**OUR
PLACE!**

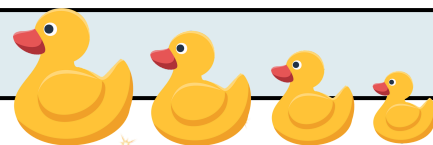


SOME UPCOMING DATES

Make sure you have these on your calendar

Mon, 2 June	All Day	King's Birthday - SCHOOL CLOSED
Tue, 3 June	All Day	Teacher Only Day - SCHOOL CLOSED
Thu, 5 June	9.30am - 12pm	Museum & Library visit - Y4-6
Fri, 6 June	9am - 2.30pm	Inter school cross country
Thu, 12 June	8.30am - 10am	MyRide free bike safety checks (bring your child's bike to school)
Thu, 19 June	From 3.30pm	Matariki - a celebration at school with a home-made kite flying competition, hangi, kapa haka performance, lanterns and Matariki cluster spotting - details later in the newsletter
Fri, 20 June	All Day	Matariki - SCHOOL CLOSED
Thurs, 26 June	4:30 & 5:40pm	School Disco - Ski Trip fundraiser
Fri, 27 June	2:50pm	End of Term Two
Mon, 14 July	8:50am	Term Three commences
Sun, 27 July	11am - 3pm	Duck Race & Mid Winter Swim
Wed, 20 August	All day	Y7-8 ski trip to Rainbow
Wed, 27 August	All day	Y4-6 ski trip to Rainbow
Tue, 14 Oct	7 - 9pm	Sprig & Fern quiz fundraiser

LET'S
CELEBRATE



ELECTIONS

School Board elections are coming up this year!

If you want to add value and contribute to the vision and strategic goals of our school, you would make a great trustee!

Elections held this September

Please express your interest to

Stephen Hailes, Chairperson

bot.riwaka@riwaka.school.nz



DISCO

Thursday 26 June

Years 1-4 4:30 - 5:30

Years 5-8 5:40 - 6:40pm

\$2 entry

All funds raised go towards subsidising the ski trips



School FUNDRAISING 2025



Friends of Riwaka School

Upcoming Fundraising

◦ **19 June: Matariki** - an evening at school with a home-made kite flying competition, hangi, kapa haka performance, lanterns and Matariki cluster spotting

◦ **27 July: Duck Race** and mid-winter **Polar Plunge** - tickets on sale soon

Hot Lunches every Friday in Term 2 - Hotdog and CookieTime Cookies

Thanks to a couple of awesome parents for putting their hands up to be our Friday lunch team for the rest of Term Two



*Together,
We make a
Difference*

Riwaka School Whānau - We Need Your Voice!

PLANNING AHEAD SURVEY NOW OPEN

Just a few minutes of your time =
a big impact on our school's future

[CLICK HERE TO TAKE THE SURVEY](#)

Growing the future together



We invite you to take part in a short survey (5 mins) to help us choose a new Vision Statement for our school. This is an important step in shaping an aspirational direction that reflects our community's values and hopes for our tamariki.

Your input will help guide the development of our school's next strategic plan — defining our goals, shaping our priorities, and ensuring we stay focused on what matters most over the next four years.

We'll also ask what our school whakataukī means to you, and your aspirations for the future of Riwaka School — we'd love to hear your voice.



Matariki 2025

Join us
THURSDAY 19 JUNE

This year Riwaka School is celebrating Matariki with a Hangi meal, kite flying and competition, lanterns and a performance from our very own Kapa haka Roopu ***'Te Puna Waiora o Riuwaka'***

**Hangi
\$20 per
meal**

7:00am - Fire lit for the hangi - school back field
11:00am - Food baskets placed into hangi pit
3:30pm - Kite flying and competition
4:00pm - Hangi lifted - Hautapu ceremony, karakia, waiata
4:30pm - Te Puna Waiora o Riuwaka perform
5:30pm - Hangi served, lanterns lit, whānau/community time

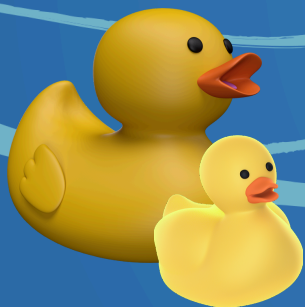
A notice will come home to order hangi meals OR order at the office OR email office@riwaka.school.nz

Payment to the school account: 030693-0114077-00 Ref Hangi + name





MID WINTER SWIM & DUCK RACE



SUNDAY, 27TH JULY 2025

KAITERITERI BEACH 11AM – 3PM

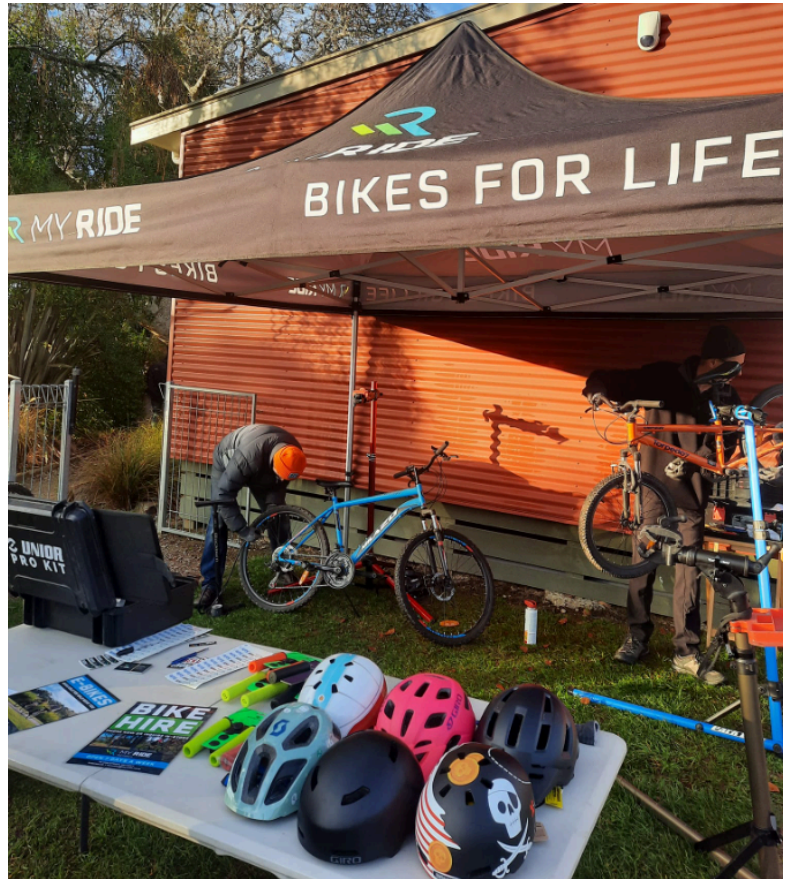
FOOD STALLS
FAMILY FUN **BIG DIG**
MUSIC **BOUNCY**
CASTLE



COMMUNITY NOTICES

**Bring your child's bike to school for a free safety check
- Thu, 12th June from 8.30am**

MyRide Motueka will once again come and complete a free "10 Point Safety Check" on student bikes. They are also offering a maintenance workshop for \$5 per child. For full details please check your emails or Hero notification and register your child for the workshop.



**DO YOU HAVE A
LOVELY GARDEN AND
WOULD LIKE TO
TAKE PART IN OUR
2025 GARDEN
TRAIL?**

We need gardens for our annual garden trail, which will take place on the weekend of 15th and 16th November 2025.

027 255 6599

motuekadistricttoylibrary@gmail.com

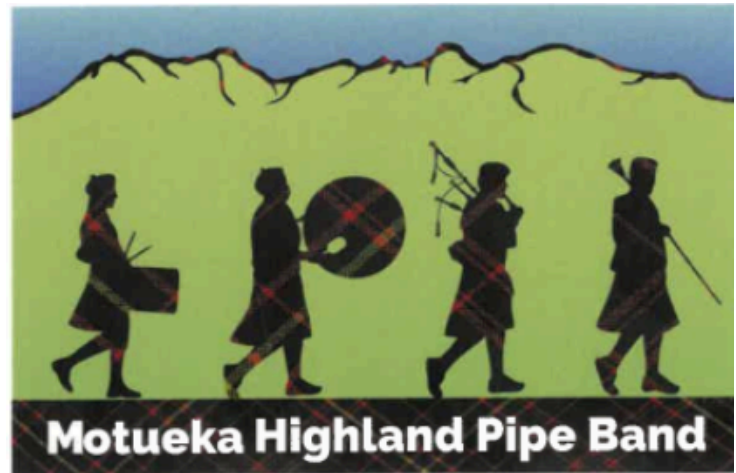


The Garden Trail is organised every year by the Motueka District Toy Library. The Toy Library is a not for profit organisation supported by volunteers and grants. The Garden Trail is its major fundraiser! It is hugely popular, bringing in visitors from near and far! Please get in touch if you would like more information or would like to sign up to take part.

Any help is always greatly appreciated!

027 255 6599

motuekadistricttoylibrary@gmail.com



Come and Join Us!

Learners & experienced players welcome.

Practice Mondays 7.30pm at Pipe Band Hall,
Old Wharf Rd (by Recreation Centre).
Alternative lesson times may be possible.

Please contact:

**Hamish for Pipes - 027 284 8361 or
Fay for Drums - 021 039 3559**

**Enjoy playing in the Band & displaying
our Scottish Culture at community events**

Membership for: Players and Supporters
The Band welcomes enquiries for bookings and solo playouts.
Contact Stuart: 021 0429 989

Motueka Highland Pipe Band on FACEBOOK