



RiwakaNews

#4 - 1 March 2024

Week 4
Attendance
89%

Week 5
Attendance
77%

Every day
counts!

SCHOOL
is cool!

Kia ora e te whānau - hello to all of our school families!
Here we are at the calendar start of Autumn - hard to believe - and half way through Term One. The last couple of weeks have continued to fly by at record speed, with so many great things happening around the place. It has been lovely to connect with so many of you at the school assemblies and the recent swimming day - we have so many things to celebrate about our children's learning. It is a real privilege to share in this journey with them!

There are a lot of events coming up - camp meetings, goal setting catch-ups, school photos and lots more. Make sure you keep up to date by reading the newsletters from your classroom teachers each fortnight and the school newsletter which will come out each month. The school calendar is also available online and via hardcopy that was sent home earlier this term.

If you want to pop in for a chat I will always try to make time for you, but if I can't right then, we can make a time that works for us both.
I look forward to seeing you at school - Mauri ora - Be well!

Adele Lidgard

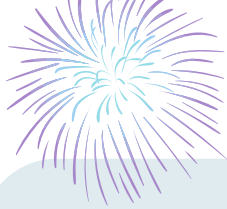
Tumuaki - Principal

*Riwaka te pura wai, whakatipu nga tamariki
The flowing waters nurture our future generations*

AWHI TOKEN WINNERS

Each week our AWHI Avengers count up how many tokens have gone into the big jars in the office. Each Learner Attribute has it's very own. They look pretty cool and they are filling up fast. Ms Lidgard says when we get to 6000 tokens the whole school will get a special reward! On Friday morning at Assembly Miss Roberts and Mrs Gilmour pull names out of one of the jars. It is usually the attribute we have been focusing on or that the team that is hosting assembly has done a skit about. If your token is pulled out there is a special treat - we get to spend some time hanging out with Ms Lidgard talking about what special things we did to get an AWHI token, drinking a hot chocolate and having a mid morning tea treat.





ASSEMBLY

Assemblies are held every week in our Performing Arts Centre - The PAC - with one of our learning teams running the programme. A general overview is that we all gather together, have our school karakia, sing the National Anthem and then the team that is running the assembly share some of their learning over the past few weeks with everyone who has come along. This will include some singing, some class learning and an AWHI learner attribute they have been focusing on through a skit or similar. Our AWHI Avengers will share the AWHI Token update, there may be some notices from the various school clubs like EnviroClub, Library, MediaMob, CodingClub etc.

Each teacher gives certificates to two students from their class for displaying AWHI learner attributes, and we do the AWHI token draw.

Come along and share in this weekly celebration of learning at our awesome school!

LET'S CELEBRATE!

AWHI Certificate Recipients

Week 4 AWHI Certificate Recipients:

CONGRATULATIONS

SonnyJoe Piggott, Tilly Krul, Ariella Mei, Hunter Brown, Mya March, Sylvia Norman, Ryder Fellows, Georgia O'Donnell, Heilala Potesio, Ashley Robertson, Charli Douglas, Remy Hawkridge, Indie Dickson, Oscar Noble, Penelope Ferguson, Ben Hailes.

Week 5 Certificate Recipients:

CONGRATULATIONS

Luca Drummond, Milan Kroupa, Sage Hawkridge, Sienna Milne, Joska Van Boekhout Mckenzie, Maizie Paul, Eli Van Kempen, Olivia Fry, Alejandro Ladds, Aurora Mikaere, Charlie Kerry, Chinique Van der Westhuizen, Wilbur Hansen, Prudey Shadlock-Smith, Addy MacKay and Huxley Bensemann!

You are all Riwaka Rockstar learners!



Week 4



Week 5

BUCKET HATS ARE COMPULSORY WHEN OUTSIDE IN TERMS 1 & 4
NO HAT - NO PLAY

WE ARE STILL SWIMMING EVERY DAY - JUST LIKE READING WRITING & MATHS!

WE ARE LOOKING FOR SOME SPONSORSHIP TOWARDS OUR YEAR 8 LEAVER HOODIES - PLEASE CONTACT ADELE IF YOU AND/OR YOUR BUSINESS MIGHT BE INTERESTED





Easter Fundraiser

This year we are selling **Hot Cross Buns** as our Easter Fundraiser. Each family will have a pre-order sheet sent home today - Friday 01 March - Buns are \$5 per packet with a choice of Traditional, Choc Cross and Cranberry Cross; each packet sold raises \$1.10 for our school. Payment and orders need to be back at school no later than Friday 15 March.

If you cannot make it to the Goal Setting Conferences and cannot make other arrangements for your child please let your child's classroom teacher know asap.

Goal Setting Conferences are planned for Friday 15 March These will start at 12:30pm and run for 15 minutes through until 6:45pm. School will close at midday on this day. Marahau Bus will run at midday. Please book your slot to meet with your child's teacher, together with your child so we can hear about the things that are important to you, and them about their learning, and how we can work with you to achieve this! Bookings via eTap App or call the office.



TIME TO UPDATE

HAVE YOU MOVED? CHANGED YOUR PHONE NUMBER? UPDATE YOUR HOUSEHOLD DETAILS HERE or email the office with any changes. You can see what details we have on file in the Etap app



Heat Humidity Hats

ALL THESE FACTORS HELP NITS TO BREED! We have heard reports that some families are really struggling with keeping head lice under control. We do have some supplies of head lice shampoo if you require some. There are also lots of other ways that help limit head lice - keep hair tied up tightly at school, don't share hats, brush hair daily (100 strokes) and use Tea-Tree products on the hair.



THANK YOU!

A BIG THANK YOU

THANK YOU FOR RETURNING OUR SOAKER HOSES, BUCKET AND HOSE FITTINGS.
IT IS GREAT TO HAVE OUR STUFF BACK!
FROM THE ENVIRO GROUP



Whānau Literacy Info Session

When: Wednesday 13 March from 3:05pm
Where: Riwaka School PA Centre
What: Information for parents and whānau about the literacy approach used at our school and how family can support reading at home.

This is targeted at Year 0 (New Entrants) to Year 2 students but is open to all families.

Contact: tess.hansen@riwaka.school.nz

ABC

THANK YOU



You may recall our Duck Race was a huge success last year - thanks to the FORS (Friends of Riwaka School) - we raised over \$13000.00
This money has now been spent on Library soft furnishings and sports equipment

including new lane ropes and backstroke flags for the pool, a line marker for the courts and field and brand new football nets which will be going up shortly! Thank you for supporting our school FORS!



Always believe something wonderful is about to happen!



School Photos

Wednesday, 20th March

If you would like your children to have a photo together please complete this short form online or email Jane. Family photos will be done during the lunch hour, 12.30-1.20pm.



School Camps are coming up in Weeks 10 and 11.

Information Packs with a detailed itinerary, suggested gear list and parent support rosters will be given out at our student Goal Setting catch-ups on Friday 15 March. If you are unable to make it to those - don't worry; a copy will be sent home with your child on Monday 18 March.

We will hold a second Camp Meeting on **Tuesday 19 March @ 6pm** in the PAC.

Camp payments can now be made to the school bank account. You can make a payment arrangement with Jenna if this is helpful. Make sure you put the reference CAMP and your child's name.





COMMUNITY NOTICES



Sunday Evening Badminton Motueka

At the Motueka Rec Centre

From 18.30 until 20.30 Start 3 March 2024, check FB below for dates and any cancellations

5 courts, 2-3 courts reserved for youth training 18.30-19.30, the rest 'Drop-In'

\$5. Rackets and shuttles provided

<https://www.facebook.com/profile.php?id=100094152192358>

Facebook: Motueka Sunday Evening Badminton

Contact Sjors or Sanne, 0284072650, also for any coaching or other requests.



Fun & Educational
CODING LESSONS

Learn to code with expert tutors.

Gain the ability to create with technology (instead of just consuming it).

All skill levels welcome.

Grab a free trial lesson at codingnz.com

Ages 9 to 11
12 & 13
14 to 16

SOLAR TSUNAMIS

Tikohu Orage Museum is thrilled to bring its newest science showcase to the Motueka District Museum. Get hands on with magnets, play with a plasma ball, generate your own electricity, make an aurora, and more!

Solar Tsunamis – Paraterehua Kihirau introduces you to the science of space weather, and explains how a phenomenon that produces the aurora could also cripple our electricity and communication systems.

Find out why space weather poses these risks, and learn how an international research collaboration led by the University of Otago is preparing New Zealand's response to a hazard that is out of this world.

Come along to explore our free, educational, fun, and interactive showcase!

29 February 2024 until 22 March 2024

Developed by

Hosted by

Take a peek behind the ports!

Sunday 17 March

Gates open to the public from 11.00 until 03.00

- INTERACTIVE EQUIPMENT & VISUAL DISPLAYS
- PORT INSIGHTS - SPLASHED SESSIONS
- PORT NELSOn HISTORICAL EXHIBITION
- COMMUNITY INFORMATION TABLES
- GUIDED TOURS
- KIDS ACTIVITIES
- FOOD & DRINK

All welcome!

Port of Nelson, Port Nelson
[PORTOFNELSON.GOV.TZ](https://www.portofnelson.govt.nz)

