

RiwakaNews

Kia ora e te whānau,

As we've come to the end of Term One and head into the holiday break, I want to take a moment to reflect on what has been a busy, vibrant, and positive start to the year at Our Place.

Our ākonga have settled beautifully into their learning, building strong relationships, showing curiosity, and embracing opportunities across the curriculum. From our inquiry into *Moana Under Pressure*, to experiences beyond the classroom, it has been wonderful to see our learners living our AWHI values—learning together, showing care for one another, and growing in confidence.

A highlight this term has been the way our school community continues to come together. Whether through events, learning partnerships, or everyday moments at the school gate, that sense of connection and belonging is what makes Riwaka School so special. We are truly connected to community, nurtured to grow, and empowered to flourish.

The term break also brings a special opportunity for me personally, as I get to spend time with my children and grandchildren—one of my greatest joys — and putting my feet up with a good book or two! I know many of you will be looking forward to similar moments of connection with whānau over this time.

As we head into the break, I hope this is a time for rest, connection, and a chance to recharge. Easter offers us a lovely opportunity to slow down, spend time with loved ones, and enjoy the simple things.

Thank you, as always, for your ongoing support of our school. It makes a real difference for our learners. Wishing you all a safe and happy Easter.

Ngā mihi nui,

Adele Lidgard
Tumuaki - Principal



Mārahau Education Camp

Working Bee

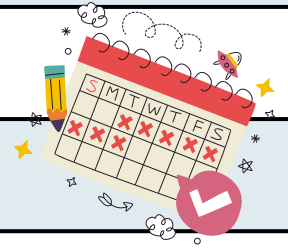
On **13 & 14 April** there is a working bee at the camp.

Mitre10 Helping Hands will be there building a massive deck and the camp administrators have asked for any locals to come along and lend a hand with giving the place a spruce up. There will be a BBQ for the workers.



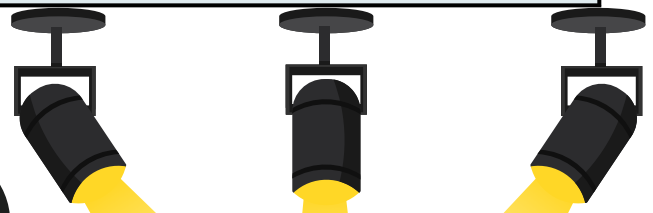
SOME UPCOMING DATES

Fri, 3 April		Good Friday - school closed
6 - 17 April		School Holidays
Mon, 20 April	8:50am	Term 2 starts
Fri, 24 April	10.30am	Mihi Whakataua and School Assembly
Mon, 27 April		ANZAC Day - school closed
Tue, 5 May	6pm - 8pm	School Board meeting
Thu, 21 May	10am - 2pm	School Cross Country
Fri, 22 May		Teacher Only Day - school closed
Mon, 1 June		King's Birthday - school closed
Tue, 9 June	6pm - 8pm	School Board meeting
Fri, 3 July	9:10am 2:50pm	Learning Celebration Assembly School finishes for Term 2



Term Two Friday Lunches

A popular option is returning - hot pies
 More information will come home on the first day
 back with further options and pricing.
 Orders need to be received by Thursday at midday
 for catering purposes.
 Thanks for your support
 The FORS



Look out for
 our
SPOTLIGHT
 section coming up
 next term



RIWAKA SCHOOL

HOT CROSS BUN

FUNDRAISER SUCCESS!

362 BAGS SOLD!

\$434.40 RAISED!

THANK YOU FOR YOUR SUPPORT!
Your generosity makes a real difference.

Funds will be put towards:

- TEACHER AIDES
- CURRICULUM
- LEARNING RESOURCES

TOGETHER, WE ARE SUPPORTING OUR STUDENTS & SCHOOL COMMUNITY!

- Jane Corston, FORS

AHI HOUSE

BAKE SALE SUCCESS!

\$193.50 RAISED!

Thank you for your amazing support!

Jane Corston - FORS

FUNDS WILL GO TOWARDS:

- ✓ Teacher Aides
- ✓ Curriculum
- ✓ Learning Resources

Making a difference in our school community

THANK YOU TO THE HOUSE CAPTAINS FOR MAKING THIS HAPPEN!

Jane Corston - FORS

THANK YOU!

Thank you for supporting our school through our fundraising initiatives - every little bit helps! The Board have committed all fundraising for 2026 to go towards curriculum and learning support.

If you can help the FORS please get in touch with **Jane Corston**
Fundraising & FORS Liaison

jane-schoolboard@riwaka.school.nz



COMMUNITY NOTICES

School Holiday fun

MR

Fungus

A thrillingly,
ridiculous, silly show

Sat. April 11th

Motueka Chanel Arts
Centre

SCH. CHILDREN: \$5
ADULTS \$25



This April, **Bridge Valley** is running two 'Army' themed overnight holiday camps:

Junior Army Camp (Ages 8-11) 7 - 10 April

A three-night overnight camp packed with team challenges and exciting activities including archery, rock climbing, drift trikes, and more.

Ultimate Army Camp (Ages 11-13) 13 - 17 April

A four-night overnight camp featuring our extreme activities like high ropes, luge, laser tag, and more. This camp also includes a trip to Armageddon Paintball!

For more information or to register, visit www.bridgevalley.co.nz.

Riwaka Scout Group have made the difficult decision to say goodbye to the Riwaka Scout Den at the Domain following the big floods in 2025.

There have been Scouts in Riwaka since the early 1900s, and the Riwaka Den itself has been their home for more than 50 years, so on **Sunday 19 April**, Riwaka Scouts will be holding a short ceremony for a formal final closing and Flag Down.

All former members or adults who have a connection to the Riwaka Den are welcome to join us, as we say a farewell to the building that's been part of our community since the 1960s. If you know of someone with a previous connection to the Riwaka Den, please pass on the invite to them to join us at 2pm, Sunday 19 April. Contact for more information: riwaka@group.scouts.nz

