



RiwakaNews

#10 - 31 October 2025

Kia ora e te whānau,

It has been a big few weeks in education, and I'm sure many of you will be aware of the pushback from school leaders and teachers regarding the updated curriculum. While our school had embraced the changes introduced in 2024, the rewrite that arrived in our inboxes a couple of weeks ago has very little in common with that earlier draft.

The essence of the original documents — which we had embraced and were already working towards delivering in authentic and meaningful ways — has gone. The new version suggests that all children learn the same way, at the same time, and that learning can be reduced to a set of tidy steps. As educators, and as parents, we know that isn't how real learning works.

Children are wonderfully complex. Their learning grows through curiosity, relationships, culture, language, and the connections they make between home and school. When we simplify learning to the point that everyone follows the same script, we risk losing the richness and diversity that make our classrooms vibrant and alive.

The name Te Mātaiaho — gifted to our national curriculum — speaks to the many threads of learning (aho) and to studying, observing, and making sense (mātai) of the world around us. At its heart, it was designed to honour identity, belonging, and community.

Here at Riwaka School, we remain committed to weaving those threads together — to teaching and leading in ways that recognise the whole child: their voice, their culture, their mana and their potential. No matter what changes may come from above, we'll continue to nurture learners who are connected in community, nurtured to grow, and empowered to flourish.

I'm looking forward to being back at school next week after a week spent with my family, farewelling my father-in-law. Times like this remind us how special our families are. I've always believed in a family-first approach, and I encourage you all to make time for those who matter most — our whānau are precious.

As we head into the final part of the year, let's keep that spirit of care and connection alive in our classrooms and our community. It's what makes Riwaka School — Our Place — such a special place to belong.

Ngā mihi nui,

Adele Lidgard
Tumuaki - Principal



Connected • Nurtured • Empowered

Riwaka te puna wai, whakatipu ngā tamariki - The flowing waters nurture our future generation



MEASLES

- Measles is circulating and is very contagious. There is now measles in Northland, Auckland, Manawatu, Nelson and Wellington, and we expect further cases across New Zealand.
- Watch out for symptoms – fever, cough, runny nose, sore eyes, and a blotchy rash:

Measles – Health New Zealand

- Anyone with measles symptoms must stay at home and should seek urgent advice by ringing their doctor or **Healthline on 0800 611 116**.
- Anyone who is closely exposed to a measles case must stay at home. Health New Zealand will provide individuals with advice on a case-by-case basis (including when they can leave quarantine at home).
- Health New Zealand is actively working with the schools that currently have measles cases.
- People are considered immune to measles after having two doses of a measles vaccine from 12 months or older, or if you have had measles before.
- Anyone born between 1969 and 2004 may have only received one vaccine dose and might not be fully protected. It's safe to get extra doses. A free vaccine can be booked online or via the **Vaccination Helpline on 0800 28 29 26**.

FAIR DONATIONS **Books and Plants**

Bring along to
Otūwhero class
any time that school
is open



Having a clear out at home?
Bring along any good quality household items to sell in
our White Elephant Garage Sale!
Please bring donations of items to Otūwhero class.



RIWAKA SCHOOL

Country Christmas Fair

Saturday 29 November

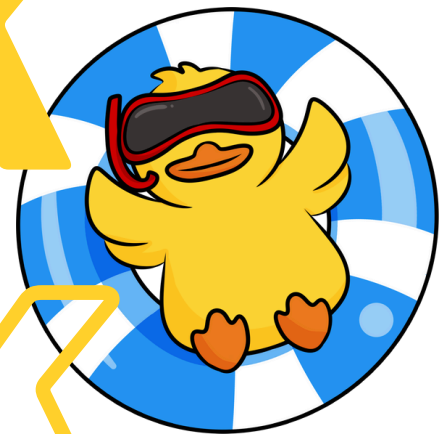
11am-3pm

Come along to our
BIG fundraiser of the
year! Lots of fun,
entertainment and
activities for the
whole family!



Gold Coin Entry

PLUCK a DUCK



Music, Kapa haka,
school bands, choir

White Elephant
garage sale

Food Stalls galore

Quick Fire raffle

Bake sale +
Riwaka's Best Baker
Competition

Big Dig
Bouncy Castles

Silent Auction

Craft Market



SOME UPCOMING DATES

Tue, 4 November	All day 6 - 8pm	Athletics Day School Board Meeting @ school
Fri, 7 November	9.15am - 2.15pm	Summer Sports Tournament
Tue, 18 November	3.15pm - 4.30pm	Riwaka's Got Talent
Fri, 28 November		Kapa Kaka Festival - Motueka Sports Ground
Sat, 29 November	10am - 3pm	Riwaka School Country Christmas Fair
Tue, 2 December	6 - 8pm	School Board Meeting @ School
Wed, 10 December	9 - 10am 6 - 7pm	End of Year Celebration Assembly Year 8 Graduation Evening
Fri, 12 December		Year 8 Big Day Out
Mon, 15 December		Whole School Beach Picnic Day
Tue, 16 December	12pm	End of term
Tue, 03 February	8:50am	Term One - 2026 begins



Volunteers needed

We need parent/ adult helpers for **Athletics Day** and for the **Fair**.
Can you help? PLEASE get in touch with the school office.

SWIMMING SEASON 2025 - 2026

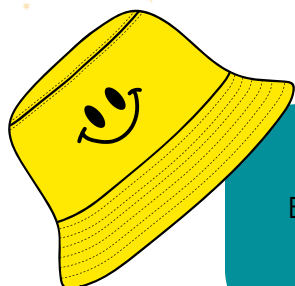
Our pool is now open!

Once again we are delighted to be able to offer Pool Keys to our school whānau, in the first instance, and to the wider community shortly after.

Pool keys are available from the office and remain \$150 for the 2025-26 season.

You will be required to sign a Pool Use Agreement.

Please see Jane or Jenna in the school office.



HATS ARE COMPULSORY IN TERM 4

Everyone must wear a bucket hat when we are outside - play times, sport, any time
Hats can be purchased at the office.



COMMUNITY NOTICES



**MĀPUA BOAT CLUB
KIDS FISHING COMPETITION**

Where - Māpua Wharf
When - Sunday 23rd November 2025
Time - Lines in 11am - out 12 noon
Registrations from 10.30am
3 Categories:

- Under six years
- 6 - 9 years
- 10 - 12 years

Spot prizes - sausage sizzle
Prize presentation

CONDITIONS OF ENTRY:
Only fish caught on lines win prizes
Maximum 3 hooks per line
Children to be accompanied by an adult at all times

Please direct enquiries to:
mapuaboatclubevents@gmail.com

Hunting & Fishing
NEW ZEALAND

Jimmys
BAIT CO



BRICK SHOW

**Motueka Recreation Centre
15th & 16th Nov**

Great Displays,
Activities, Sales
& Raffles

f TotsBrickShow

**Motueka Recreation Centre,
40 Old Wharf Road,
Motueka**
Saturday 15th Nov 9am - 5pm
Sunday 16th Nov 9am - 4pm
\$2 Entry, Cash Only, Under 3 Free



**MOTUEKA CATCHMENT
COLLECTIVE**

Riuwaka Community Gathering
Tuesday 11th November 2.30-4pm
Riwaka Rugby Clubrooms

Motueka Catchment Collective (MCC) and supporting partners invite members of the Riuwaka community to share your knowledge and learn about the Riuwaka Catchment & our local streams. You'll hear about:

- MCC's role in the catchment - Debbie Win (MCC Steering Group Chair & local farmer)
- Weed & Predator Control - Steve Holloway (MCC Pest Management Group / M.A.D Conservation)
- Stream Health Monitoring - Tasman Bay Guardians

We will also explore your interest in forming a local catchment group. Snacks provided.

Event open to everyone in the Riuwaka sub-catchment or with an interest in the health of our local streams!

RSVP: monique@mountainstosea.org.nz

Event supported by:

**TASMAN BAY
GUARDIANS**

NZ LANDCARE TRUST
NGĀ MATAPOPORE WHENUA

M.A.D
MAKING A DIFFERENCE
CONSERVATION SERVICES